

Mosaic for NEC CBxx1Q

**User guides for
Connect & Canvas**



Table of Contents

1. General
 - 1.1. Introducing
 - 1.2. System Requirements
 - 1.3. Installation and activation

2. Mosaic Connect
 - 2.1. Mosaic Connect home screen
 - 2.2. Create a session
 - 2.3. Joining a session
 - 2.3.1. Joining via native application
 - 2.3.2. Joining via AirPlay
 - 2.3.3. Joining via Web
 - 2.4. Client Toolbars
 - 2.5. System organization & navigation
 - 2.5.1. Sharing a screen
 - 2.5.2. Sharing items
 - 2.5.3. Built-in media player
 - 2.6. Exit session
 - 2.6.1. Error and recovery
 - 2.7. Managing attendees from the main display
 - 2.8. Settings
 - 2.8.1. Display
 - 2.8.2. Audio
 - 2.8.3. Network and connections
 - 2.8.4. Security

3. Mosaic Canvas
 - 3.1. Launching Mosaic Canvas
 - 3.2. Mosaic Canvas toolbar
 - 3.3. Saving / downloading a board
 - 3.4. Adding boards
 - 3.5. Renaming, duplicating and deleting a board
 - 3.6. Saving, opening and existing boards
 - 3.7. Undo and redo

1. General

1.1. Introduction

Mosaic is a suite of collaboration products designed to simplify how people share content and collaborate with each other. This document gives a high-level overview of Mosaic Canvas, a digital whiteboard tool, and Mosaic Connect, a wireless presentation solution. Both tools are included as standard on NEC's CB series display.

1.2. System Requirements

To run Mosaic Connect and Canvas, we recommend the following specification:

Attendees can join via the following methods:

Platform	Connection
Windows*	Windows application, guest app
Mac* OS	Mac application, AirPlay
iOS*	iOS, AirPlay
Android*	Android application
Web*	Chrome

* Less than 1920x1080 is supported

1.3. Installation and activation

Both Canvas and Connect are pre-installed on the CB series display. There is no requirement to activate the software. To launch either application, tap the icon on the CB series home screen.



Getting the Mosaic Connect App

Mosaic client app is available through Android and iOS app stores.

The easiest way to get the correct version is by visiting <https://connectmosaic.com> on the device. The browser will automatically detect your device and provide a link to download the app.

Alternately you go directly to each store through the below links

Play Store:

https://play.google.com/store/apps/details?id=com.displaynote.mosaic&hl=en_GB

iTunes:

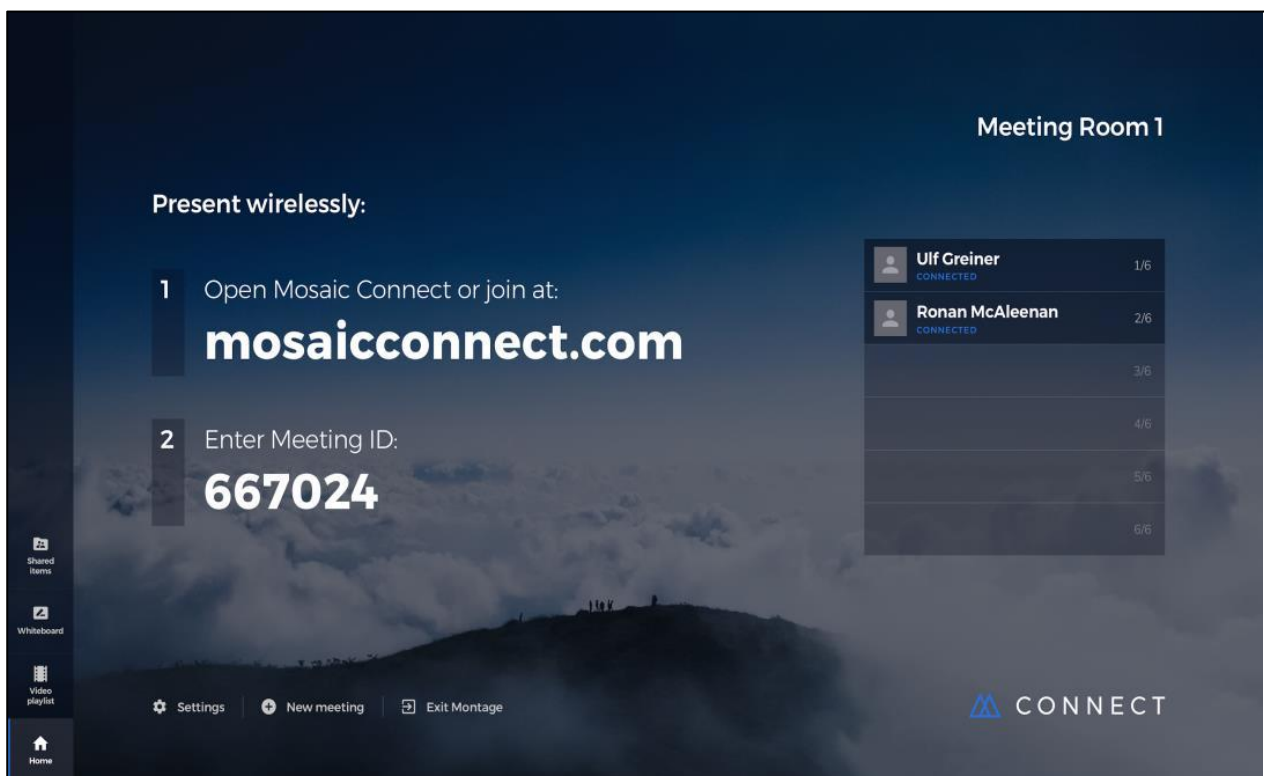
<https://apps.apple.com/us/app/mosaic-connect-app/id1450158906>

2. Mosaic Connect

2.1. Mosaic Connect home screen

The home screen contains the following information:

- Joining instructions and Web URL for attendees
- Session ID
- PIN (optional)
- Overview of connected attendees
- Settings
- New session
- Exit Mosaic Connect
- Shared items
- Home button



2.2. Creating a session

Please make sure the system is connected to the internet to make the app online. When the user first launches Mosaic Connect, a session ID will be generated. The user can also create a new session from Mosaic Connect by clicking or tapping on 'new session', at the bottom of the screen.

2.3. Joining a session

If it's the user's first time using Mosaic Connect, they need to visit www.connectmosaic.com where they'll find instructions on how to join a session.

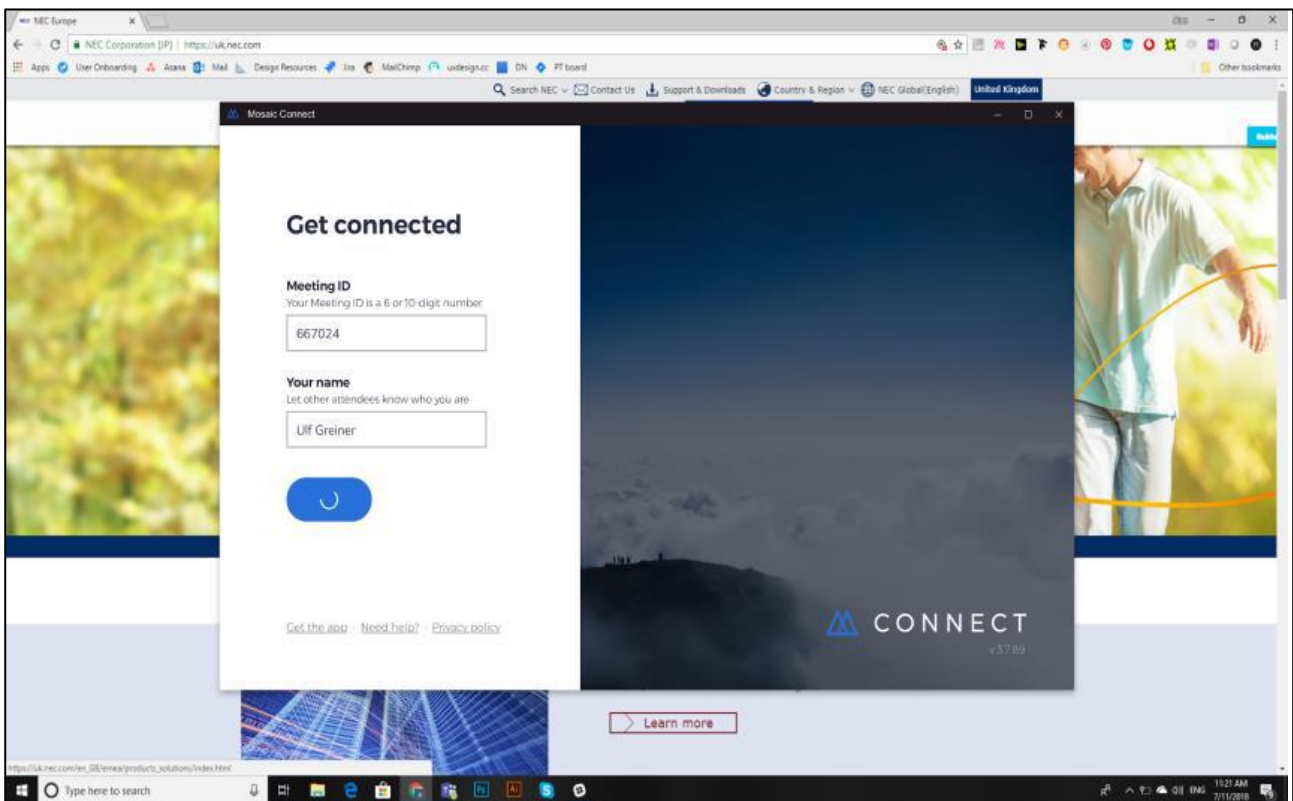
Please note, this page will adapt to attendee's hardware. i.e. Windows users will get Windows software and Mac users will get Mac software.

Users can choose to join via the web (Chrome and Firefox).

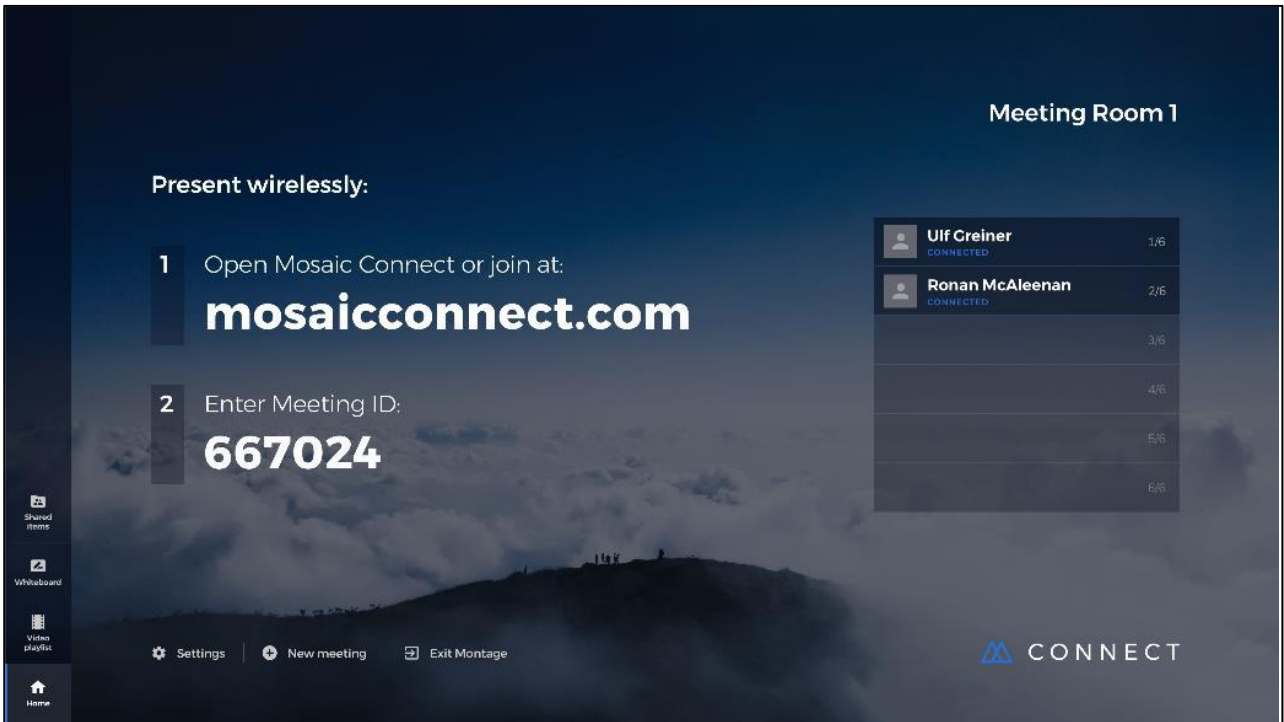
Once the receiver setting is done and Mosaic Connect app is online and running, attendees can connect to the session using client application on their respective devices, and up to 4 connections are allowed. From any client (Windows/Guest/Android/Web) open the connect application.

2.3.1 Joining via native application

Once a user has downloaded and opened the native application, the following screen is displayed:



To join, the user should enter the session ID (shown on the display), their name and then press Connect. If a PIN is required, this is an additional step. Once a user connects, their name will be shown on the home screen.



2.3.2. Joining via AirPlay

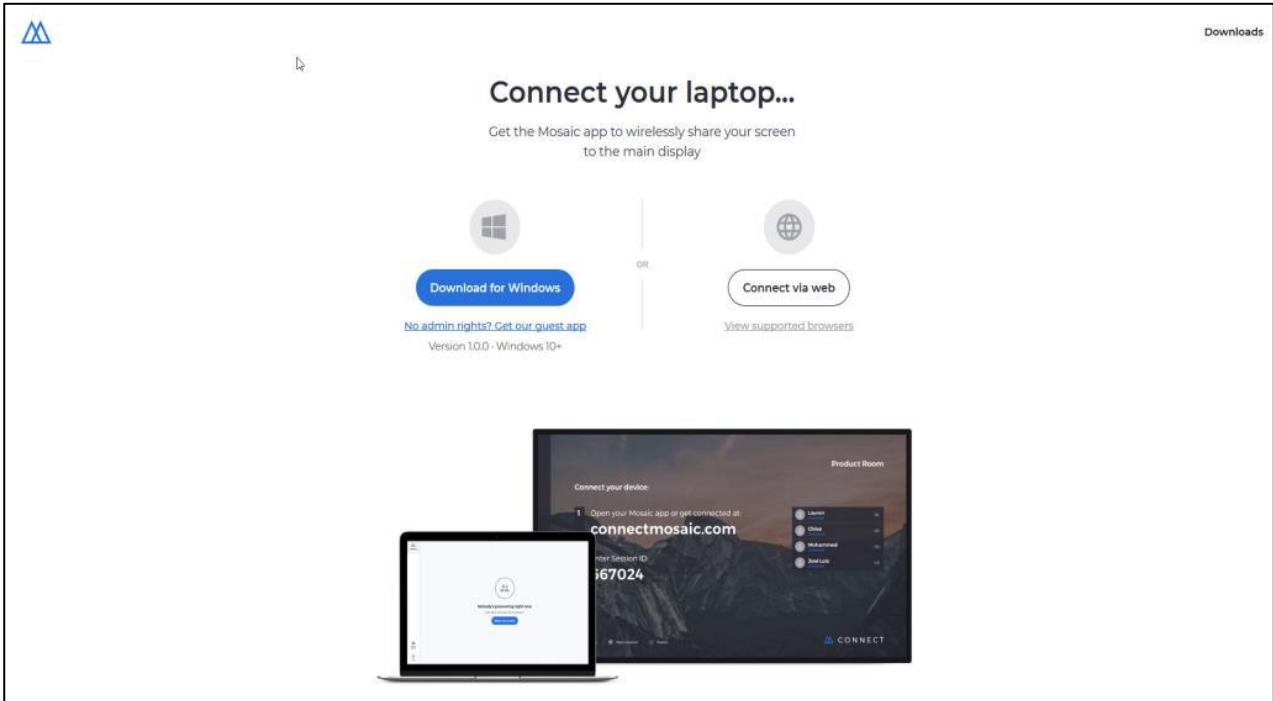
To join via airplay, swipe up on your Apple device and select "screen mirroring".



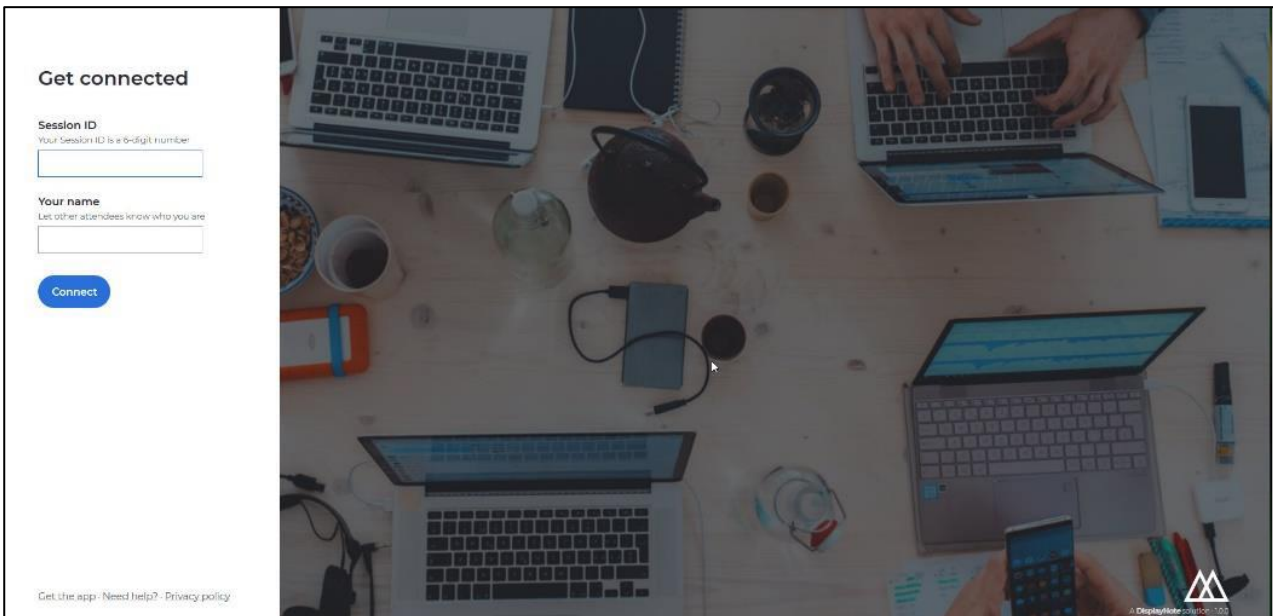
To start presenting, select the name of the display you would like to present to - you can find this on the top right-hand corner of the home screen. You will be prompted to enter a password: the password is the same as the session ID. Once connected, your name will appear on the list of connected attendees on the right-hand side. Finally, double tap your name on the touch display to present your screen.

2.3.3. Joining via web

To connect via web, go to www.connectmosaic.com and choose the option 'connect via web'.
Note: Web application should be used via Google Chrome or Firefox.



Enter your name, session ID and PIN if required.
Choose to present either your entire screen or specific application window and then click share.



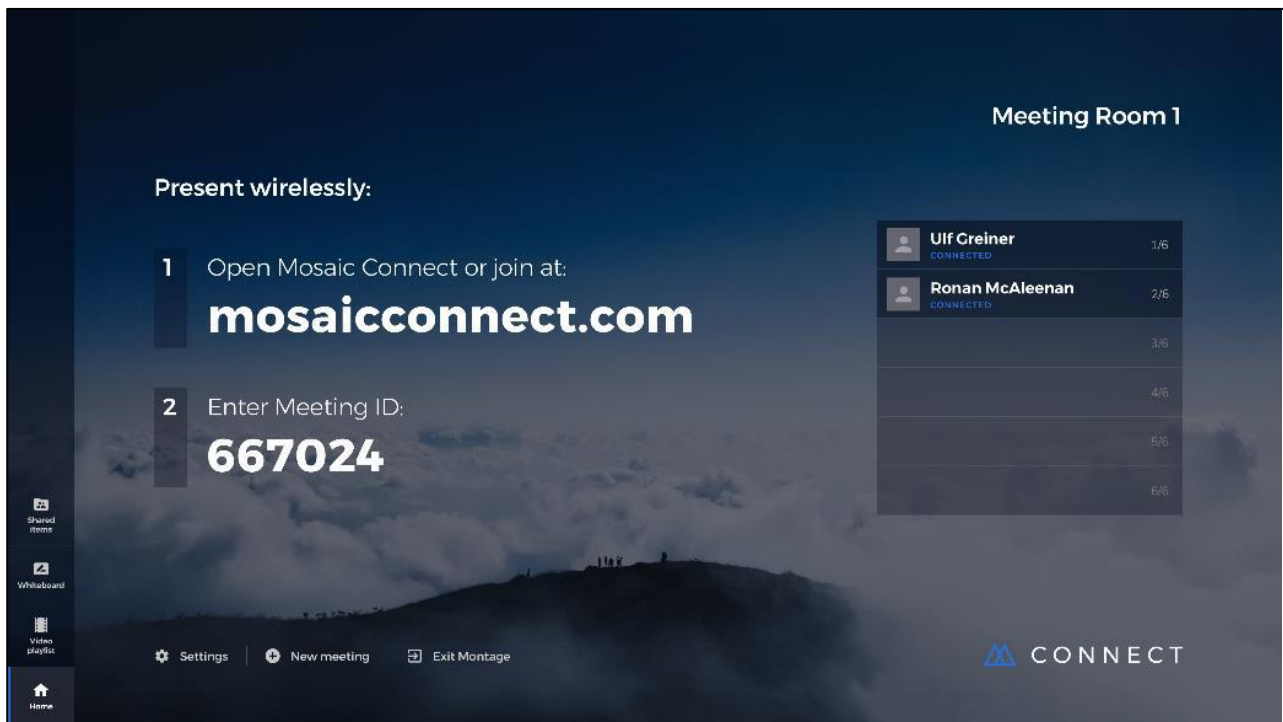
2.4. Client Toolbars

Once you're connected to the session, you can use the Mosaic Connect toolbar to:

- Share/stop sharing your screen
- Pause sharing

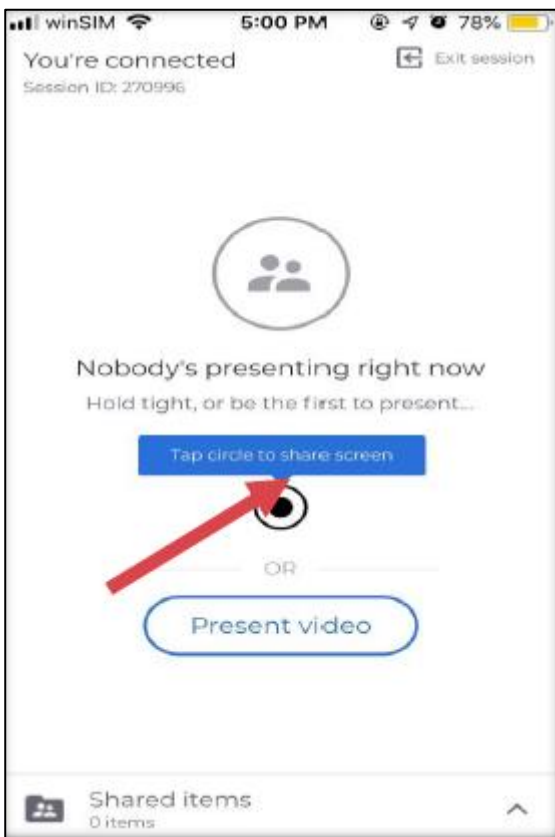
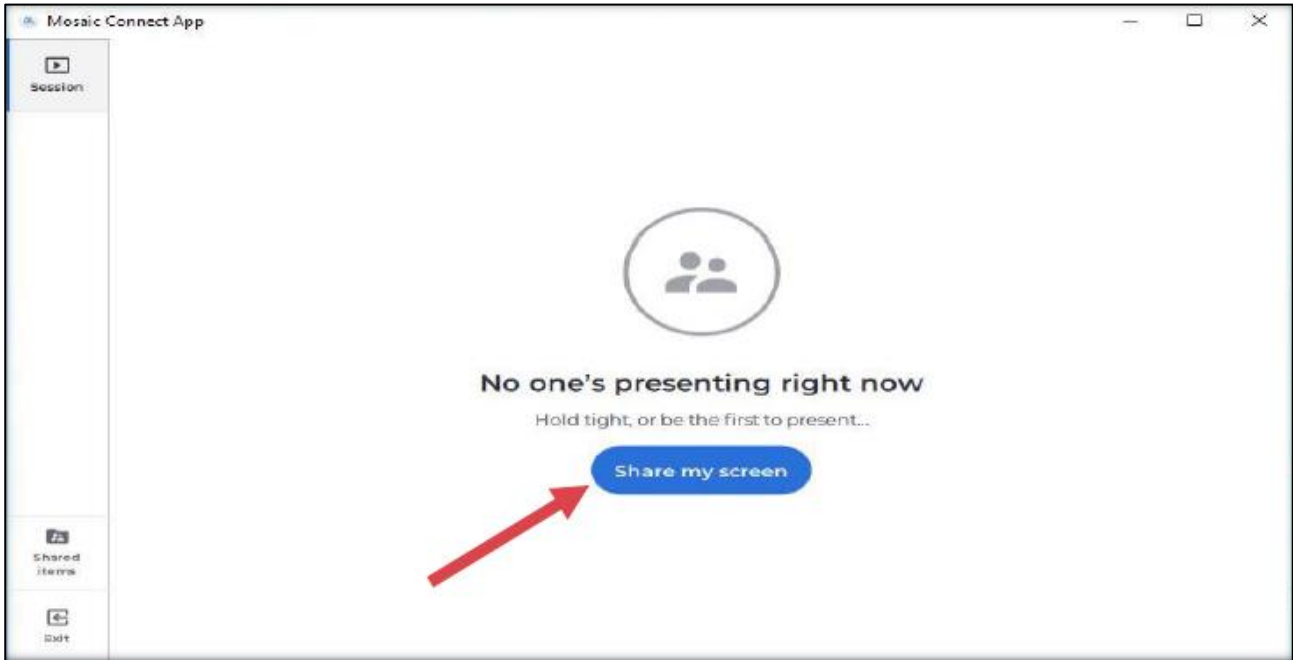
2.5. System Organization & Navigation

Once the receiver is online and running, a screen with Session ID (6 or 10 digit) with or without PIN (depends on the setting) is displayed. The CBxx1Q name is displayed on the upper right hand corner. This name can be changed in the settings - e.g. to "Meeting Room 1", as shown in the example below. A list of all attendees is displayed on the home screen. The Language, Display, Audio, Network & Connections, and Security all these options are available in the settings.



2.5.1. Sharing a screen

Attendees can share their screen with “Become a presenter” option. For windows client presenter, the control can be taken from main display. For Mac presenter, the control from main display is not possible. The screen can also be shared from mobile and Web application.



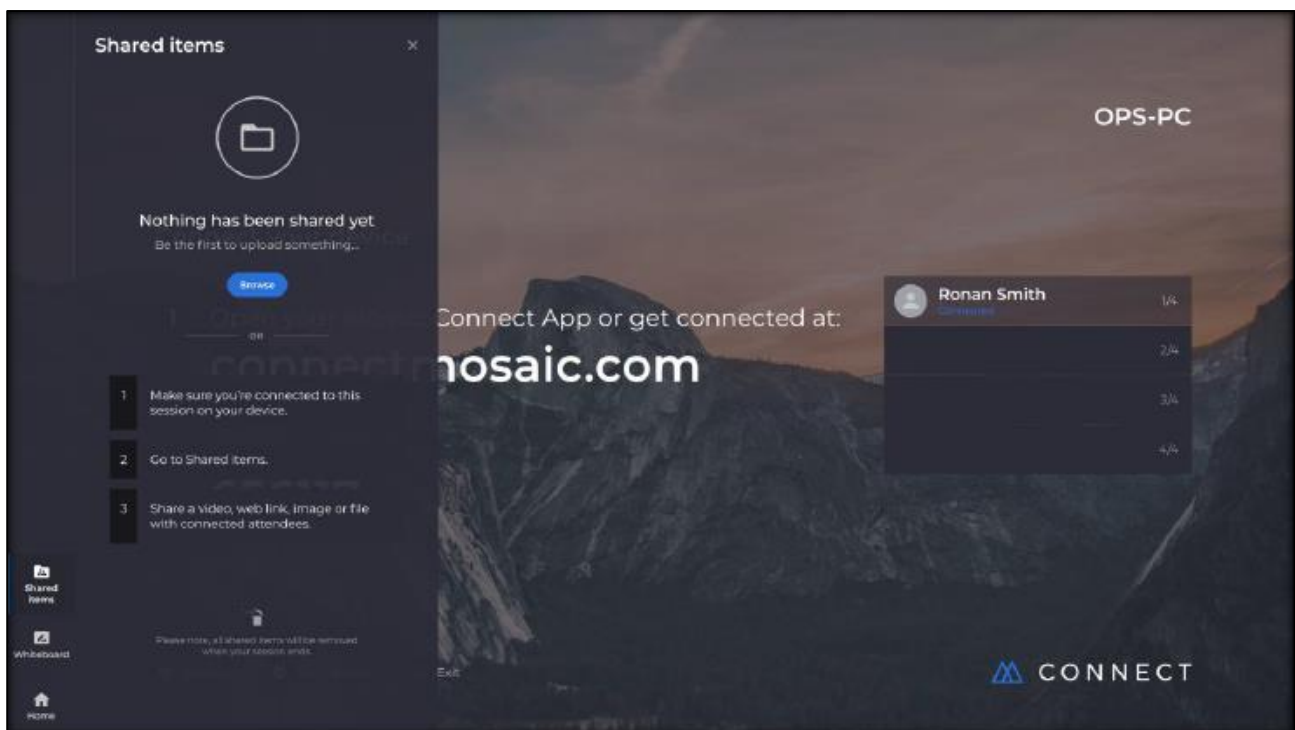
NOTE: When presenting through iOS, there is an additional step which is required to “Start Broadcast”.

2.5.2. Sharing items

Client and Receiver has the “Shared items” option, using which different files, links and videos can be shared with attendees. All shared items are kept under this option which can be easily accessed and ready for view or download for all attendees. Different web links can be shared as well as presented on the screen with all attendees.

File formats supported:

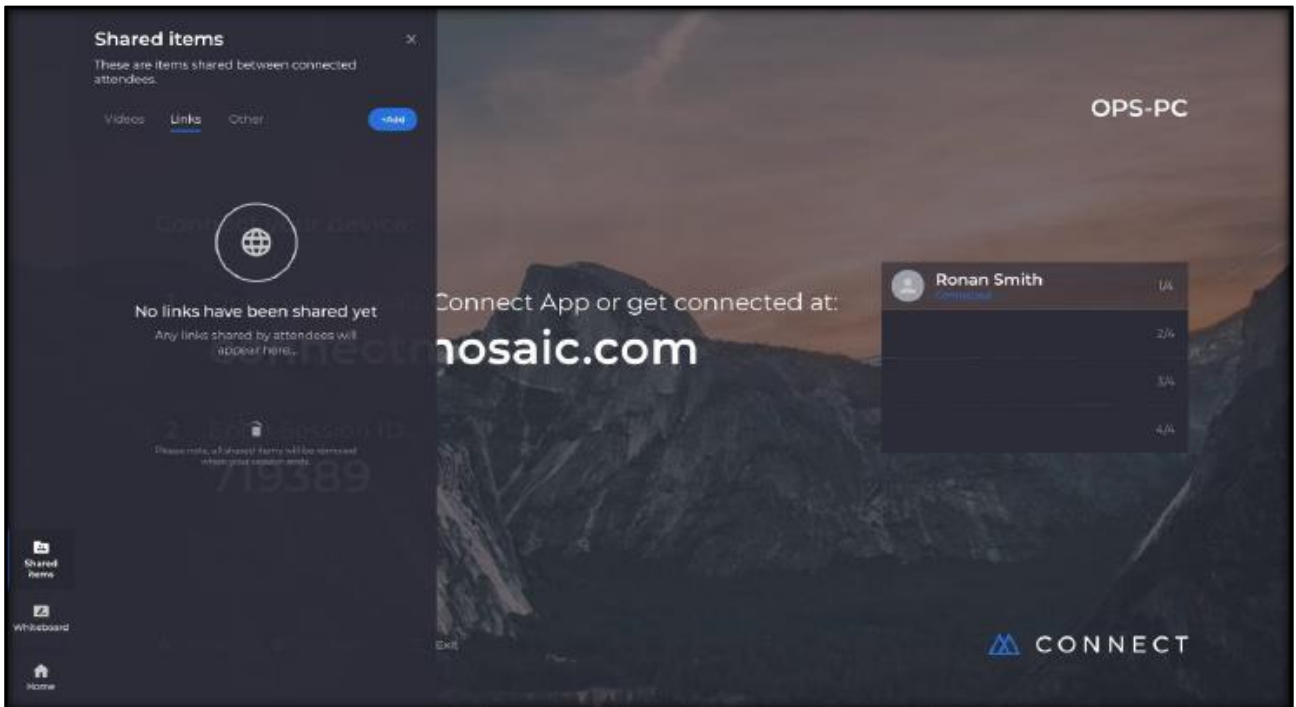
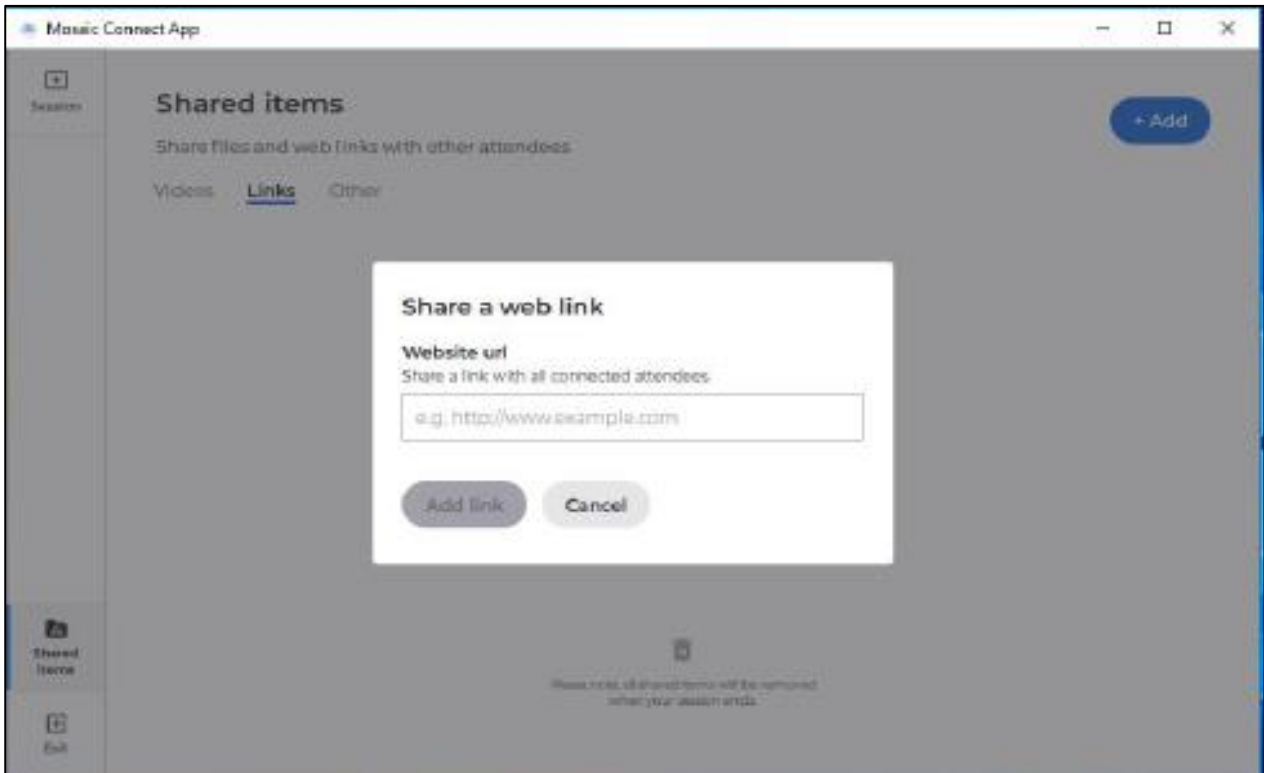
- Audio(.mp3, .wav)
- Document(.doc, .docx, .xls, .xlsx, .ppt, .pptm, .pptx, .txt, .odt, .ods, .odp)
- Image (.jpg, .png)
- PDF (.pdf)
- Zip (.zip)



Note: Once the session is closed, all shared documents will be no longer available.

2.5.3. In-built media player

The application has in-built media player, media files can be played from the receiver or client and runs smoothly with great quality. The supported file formats are (.avi, .mov, .mp4). The web links can be shared from shared items and directly presented on the screen.

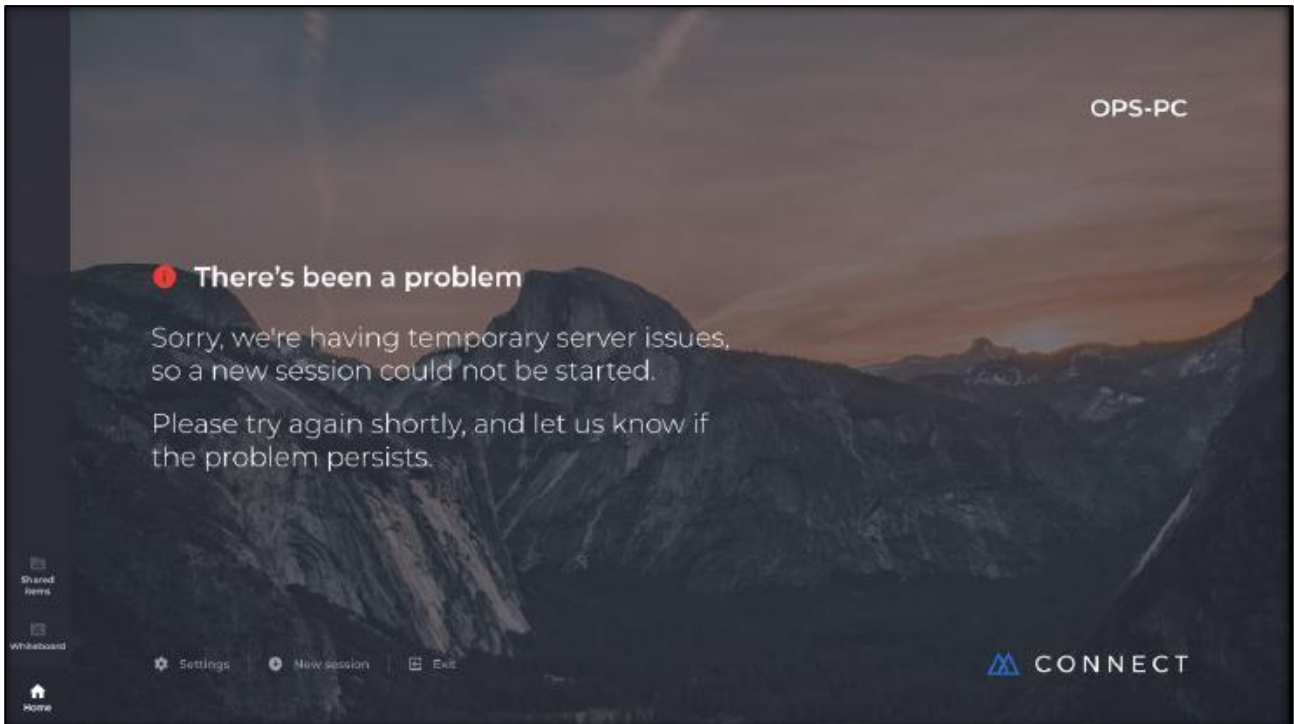


2.6. In-built media player

The session can be disconnected by choosing "Exit" option from the respective applications. The session can also be terminated in between the meeting. If receiver exits, all attendees will be thrown out of the session automatically.

2.6.1 Error and recovery

Error message - "There's been a problem"



Recovery - After initial start up the internet configuration is required to be done via Admin user. Sign out from the default user and sign in into Admin user and connect to the internet which will make Mosaic Connect app online.

NOTE: If the problem still persists, please contact us at mailto: support@displaynote.com

2.7. Managing attendees from the main display

Users of Mosaic Connect can use the home screen to invite an attendee to present. To do so, go to the home screen and double tap a user's name.

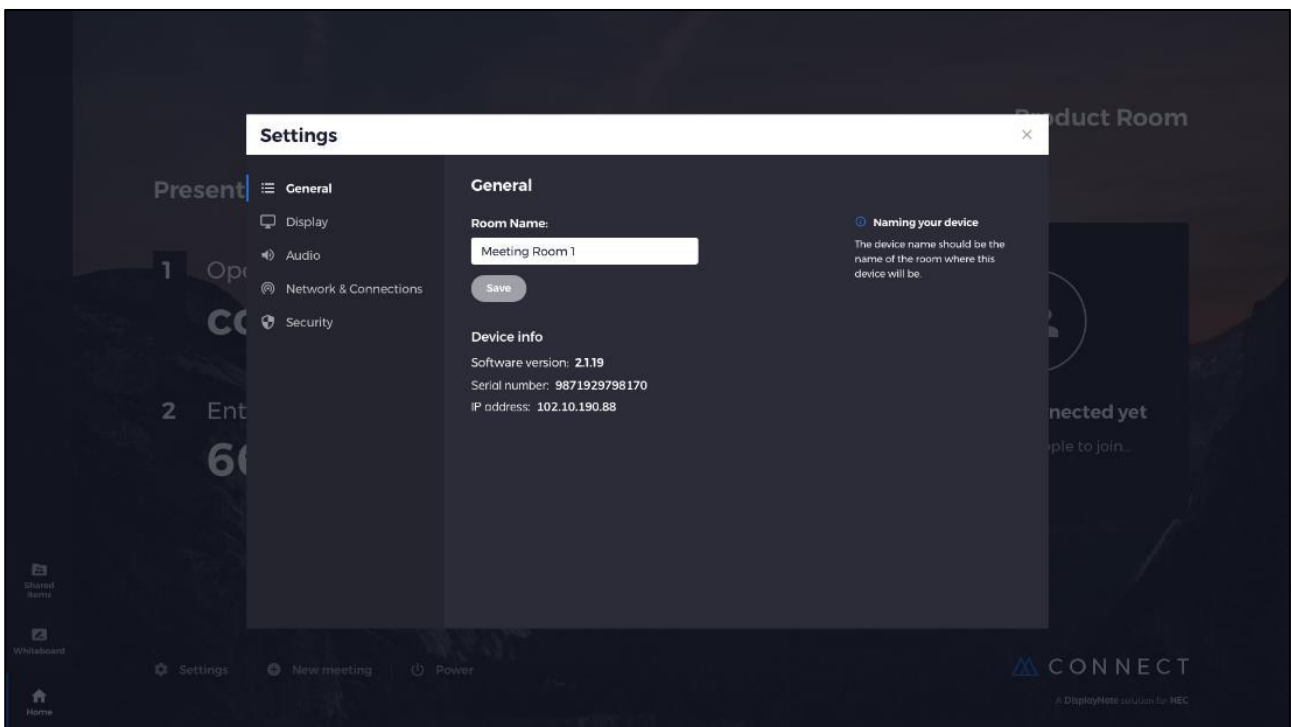
Before sharing their screen, each user will get a prompt asking them to confirm if they would like their screen to be wirelessly presented. If they select Yes, it will be shown on the main display. If they select No, Mosaic Connect will remain at the home screen.

Mosaic Connect enables back control of any connecting Windows PC.

2.8. Settings

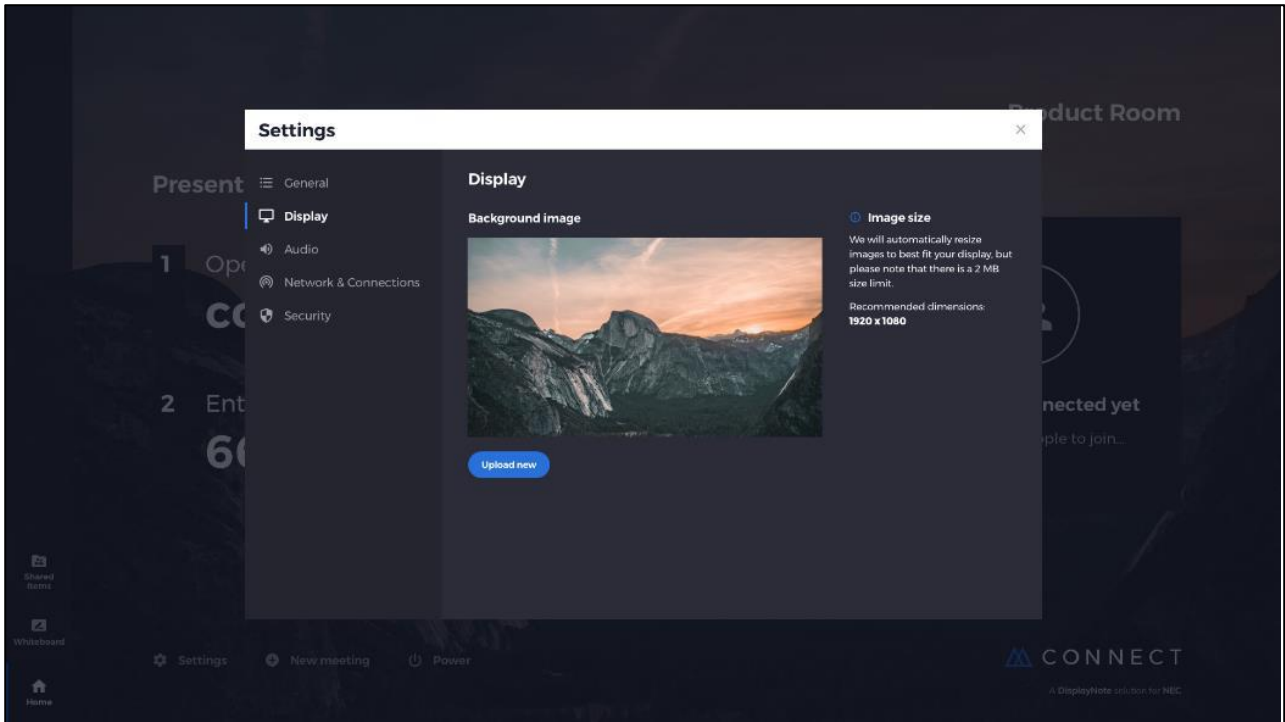
Settings are accessible via the Mosaic Connect home screen. Settings are arranged as following:

- General
- Display
- Audio & Video
- Network & Connections
- Security



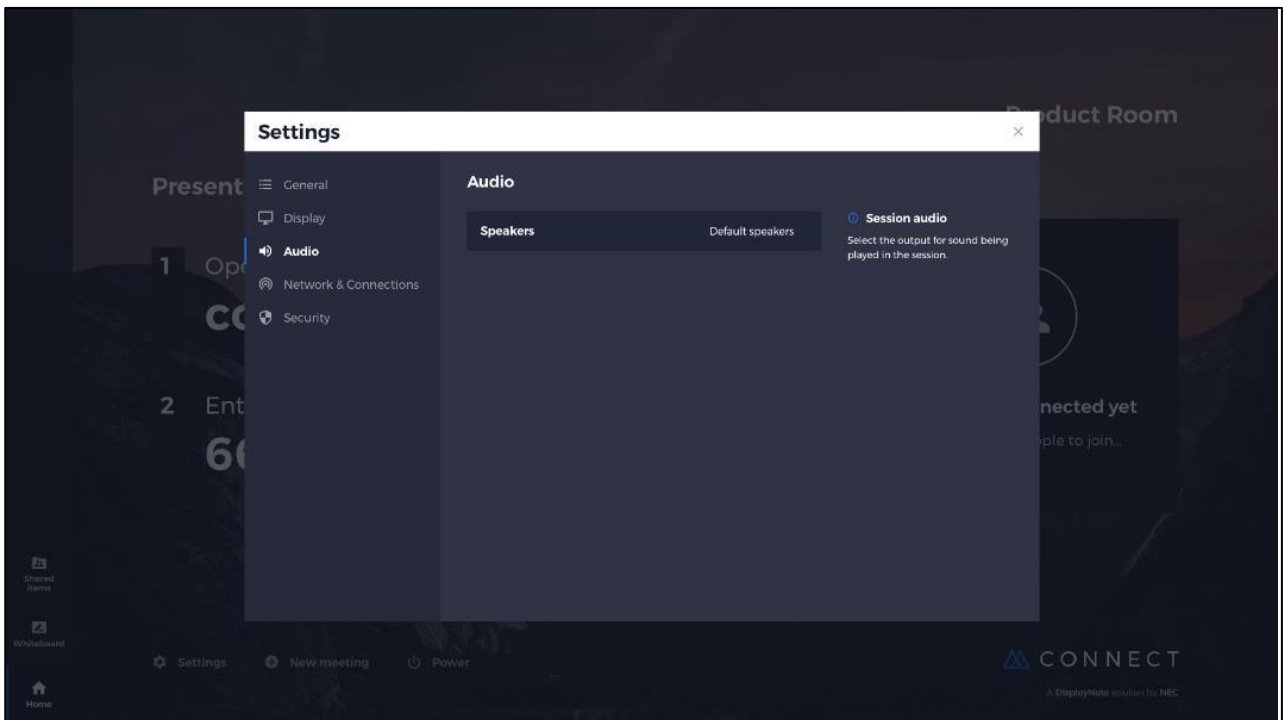
2.8.1. Display

Here, the user can change the background image that appears on the Connect home screen. Also includes recommended image size.



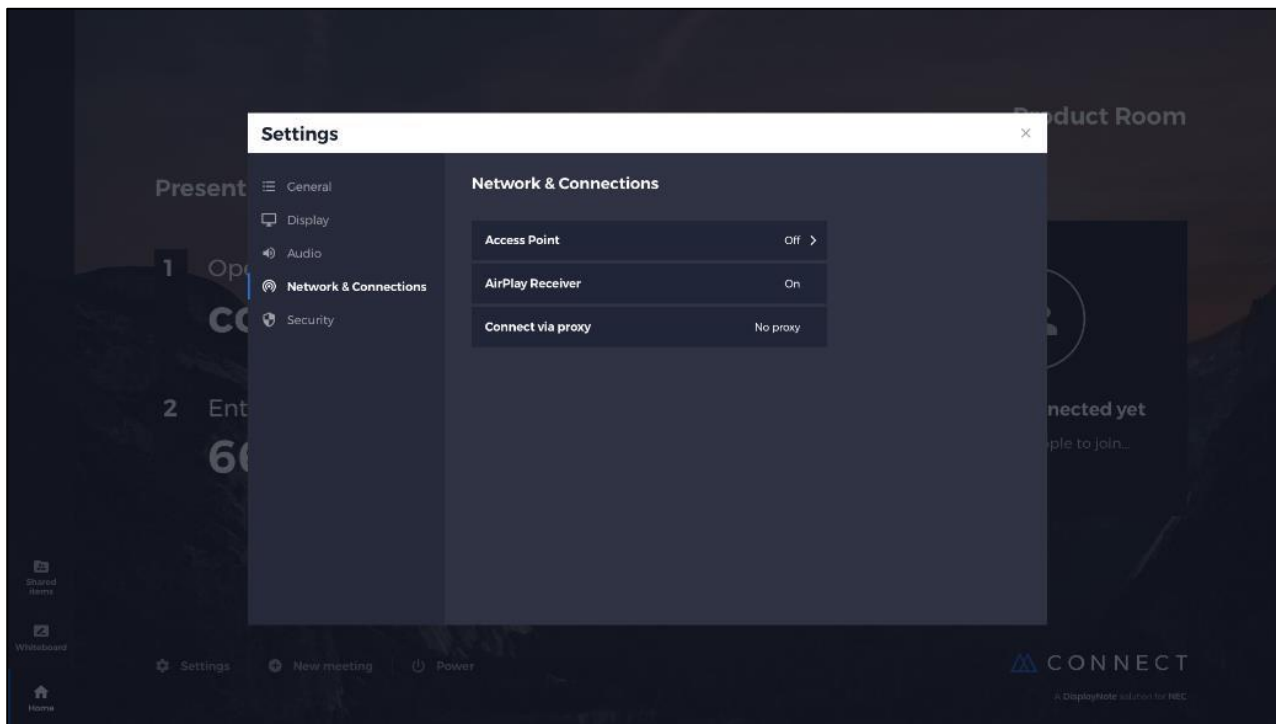
2.8.2. Audio

The user can select which speakers to use during their Connect session. Users can change video or audio outputs during a session, without disrupting the flow of the session.



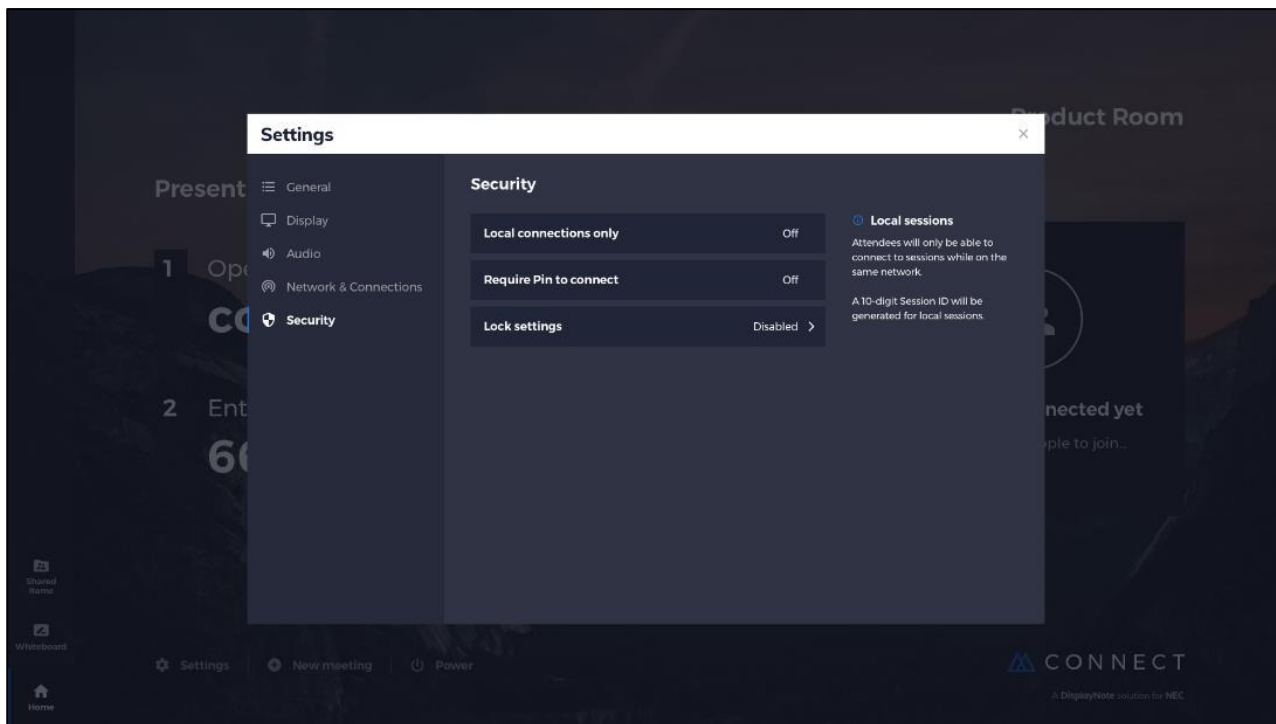
2.8.3. Network and connections

Users can choose to turn on/off AirPlay connections, Cloud connections, and Proxy connections (windows only).



2.8.4. Security

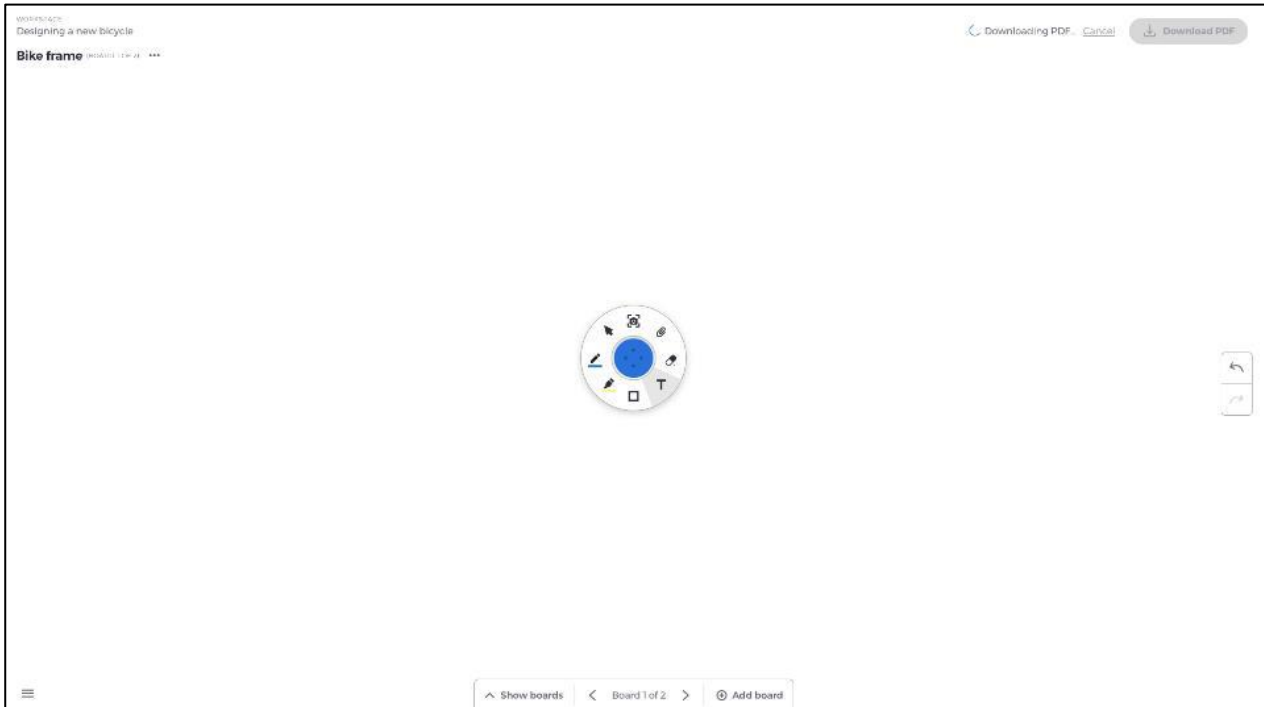
Users can choose to allow local connections only (i.e. connect to sessions while on the same network). They can enable or disable a PIN.



3. Mosaic Canvas

3.1. Launching Mosaic Canvas

Launching Mosaic Canvas will open up a blank workspace and toolbar as follows:



3.2. Mosaic Canvas toolbar

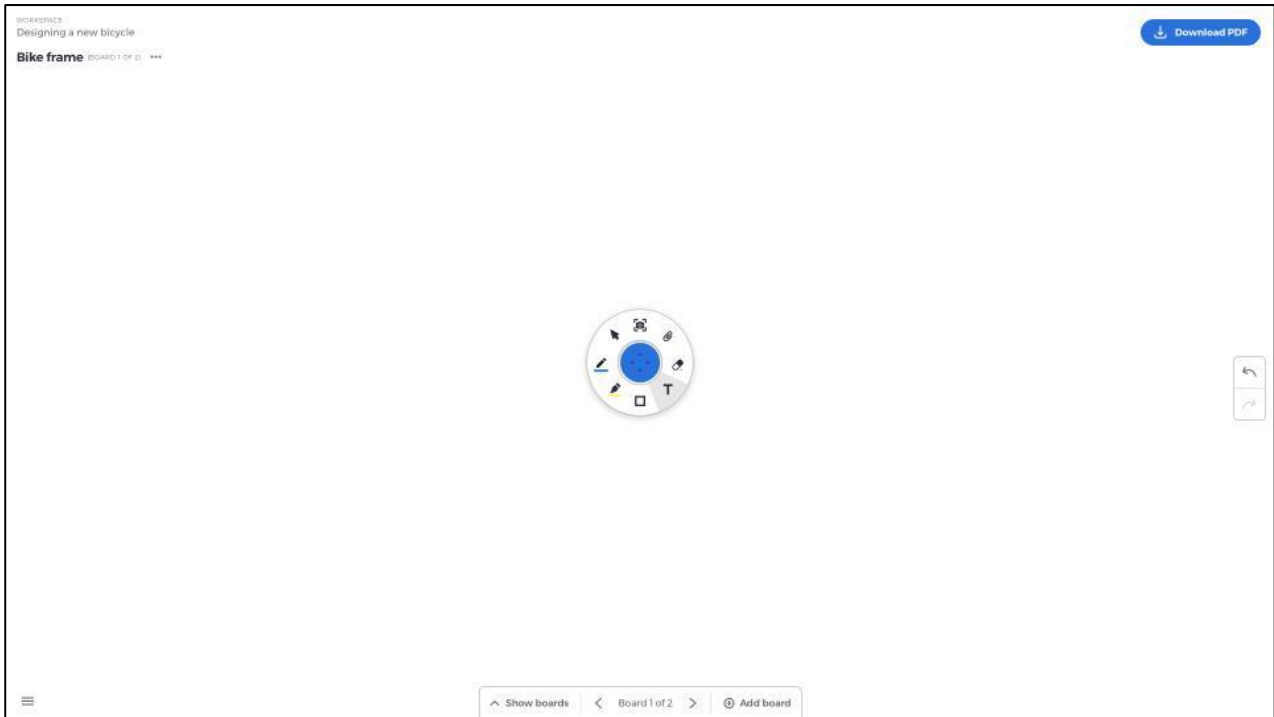
The Mosaic Canvas toolbar contains the following tools and subsets:

- Pen
 - Pen thickness
 - Pen colour
 - Line tool
 - Arrow tool
- Cursor
 - Cursor
 - Object grouping
- Highlighter
 - Highlighter thickness
 - Highlighter colour
- Shape
 - Shape fill
 - Shape style
 - Shape thickness
- Text
 - Sticky Note
- Eraser
- Attachments

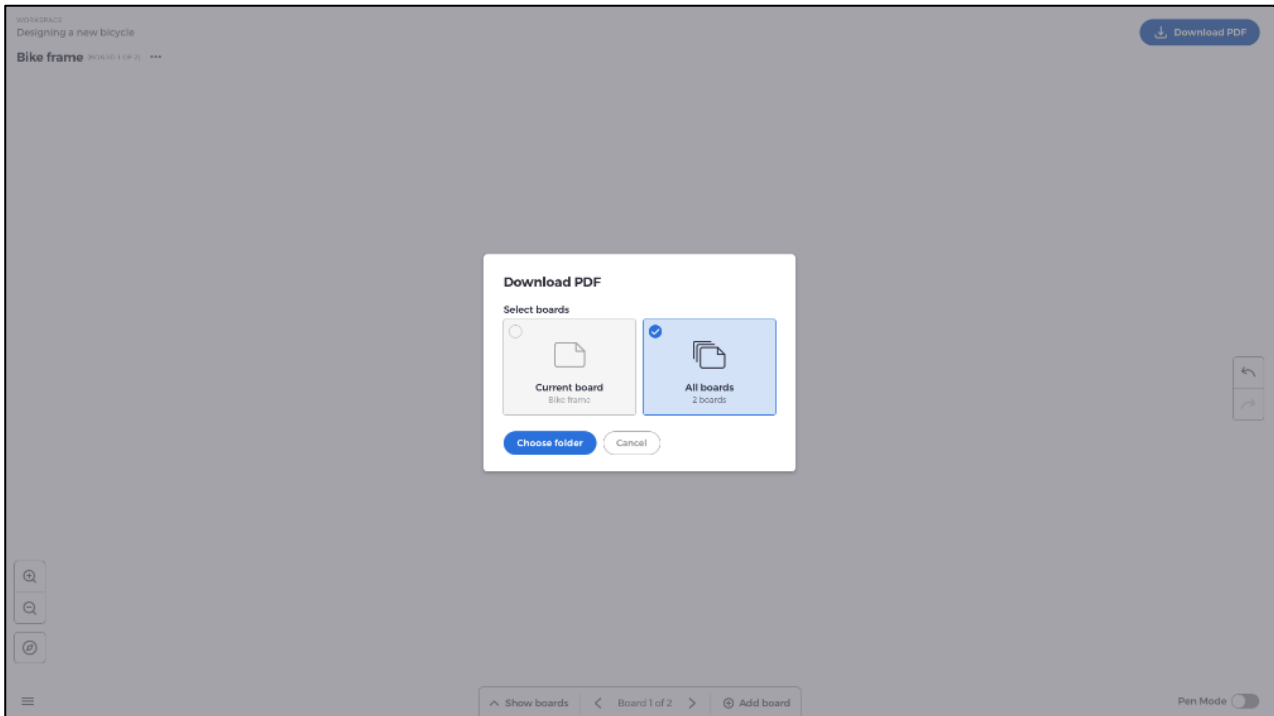
3.3. Saving/downloading a board

Each board can be downloaded to the local device. User can choose to download a Current board (the board they are working on) or All boards (every board in that session).

- To download boards
- Tap download PDF in the top right hand corner



- Select Current board or All boards

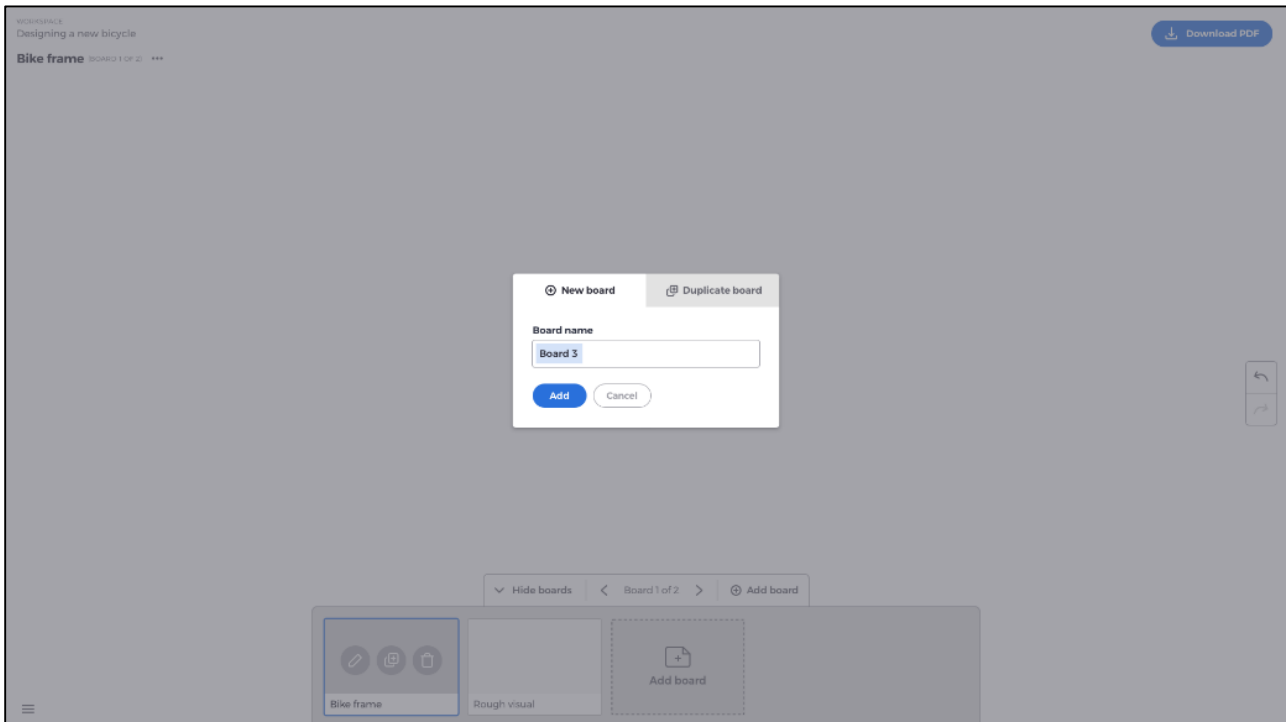


- Choose folder (this is where you'll save the board)

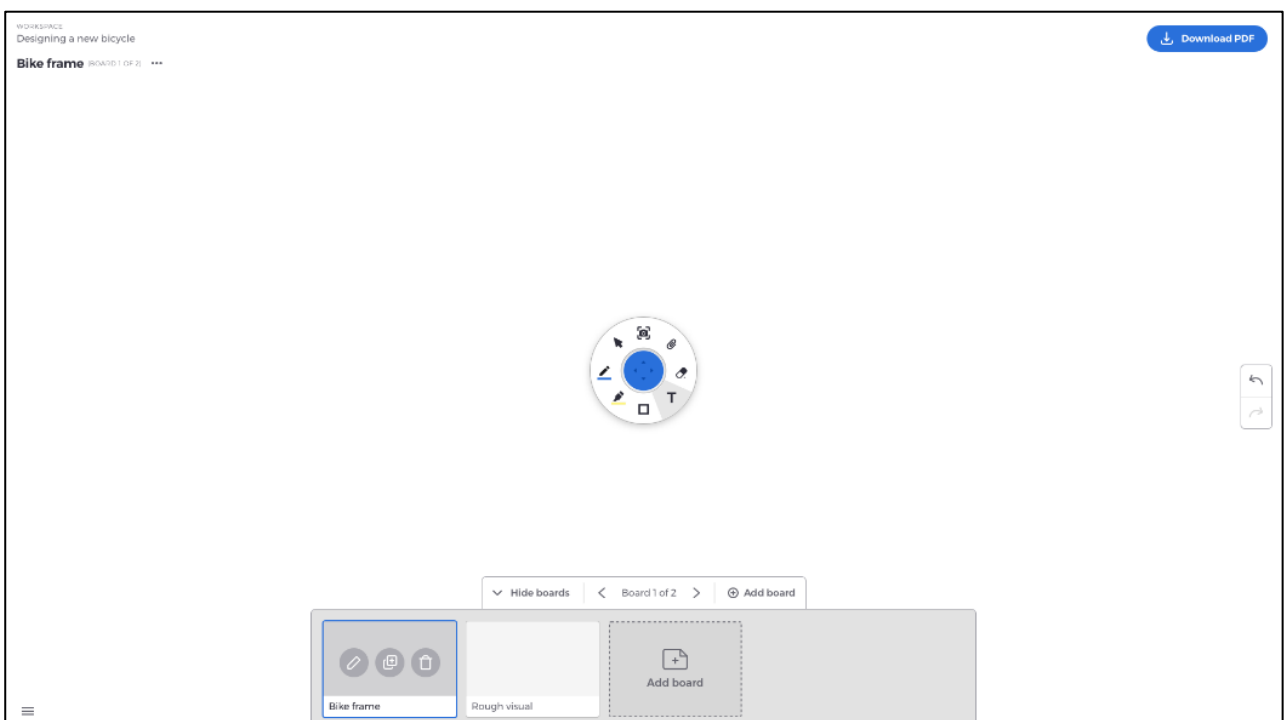
3.4. Adding boards

Mosaic Canvas allows users to add multiple boards:
To add a board

- Select add board from the bottom of the screen
- Add either new board or a duplicate board.
Note: Choosing duplicate board makes a copy of your existing board.

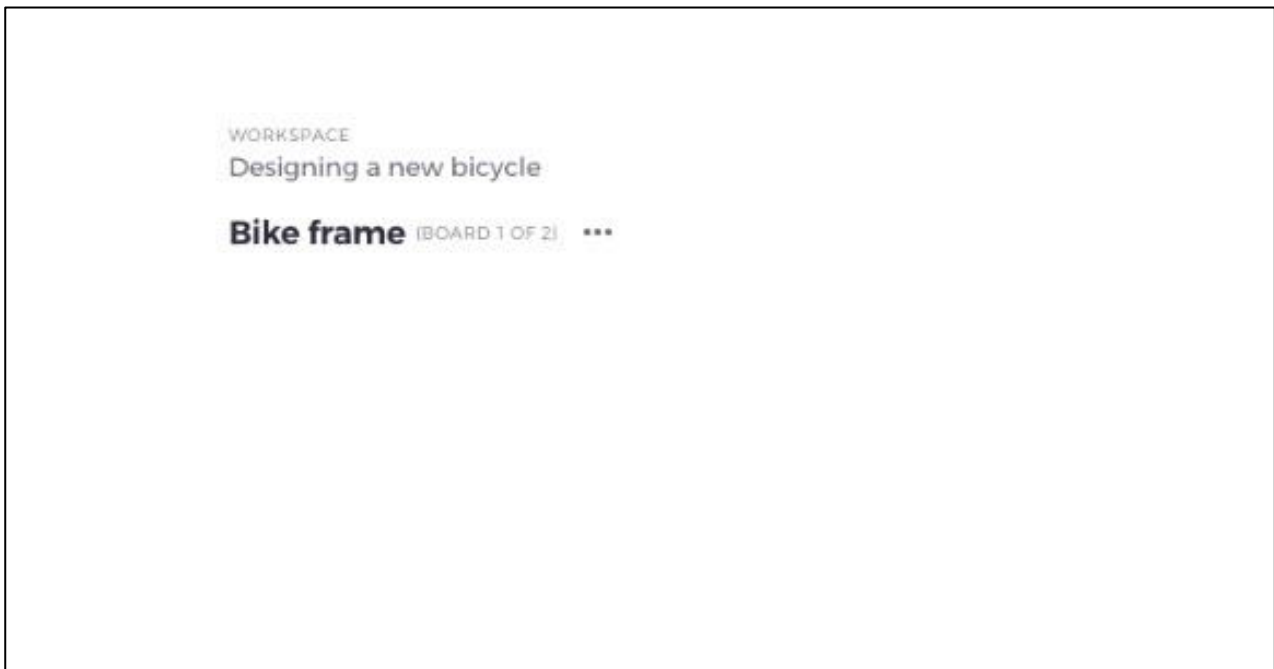


- Give your board a name
- Press add



3.5. Renaming, duplicating and deleting a board

To rename, duplicate or delete a board, tap the three dots in the top left-hand corner of your board.



Choose to either:

- Rename
- Duplicate
- Delete

3.6. Saving, opening and exiting boards

To save a board, choose the menu icon in the bottom left of the screen.



From here you can:

- **New** - Open a new board
- **Open** - Open a previously saved board
- **Save/Save As...** - Save your current board
- **Exit** - Exit Mosaic Canvas

3.7. Undo and redo

To undo or redo an action, choose the undo redo button at the right-hand side of the display.

